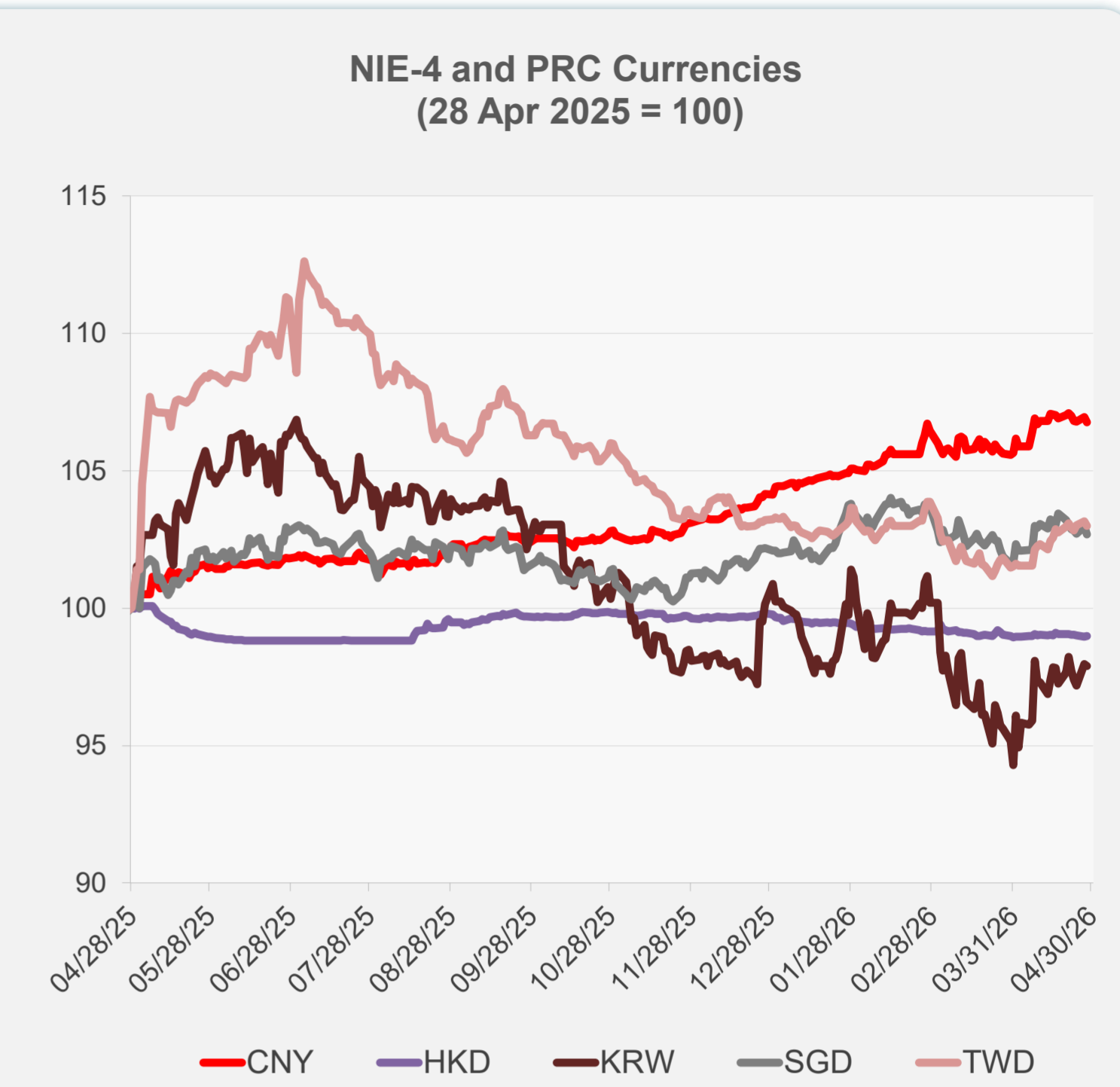
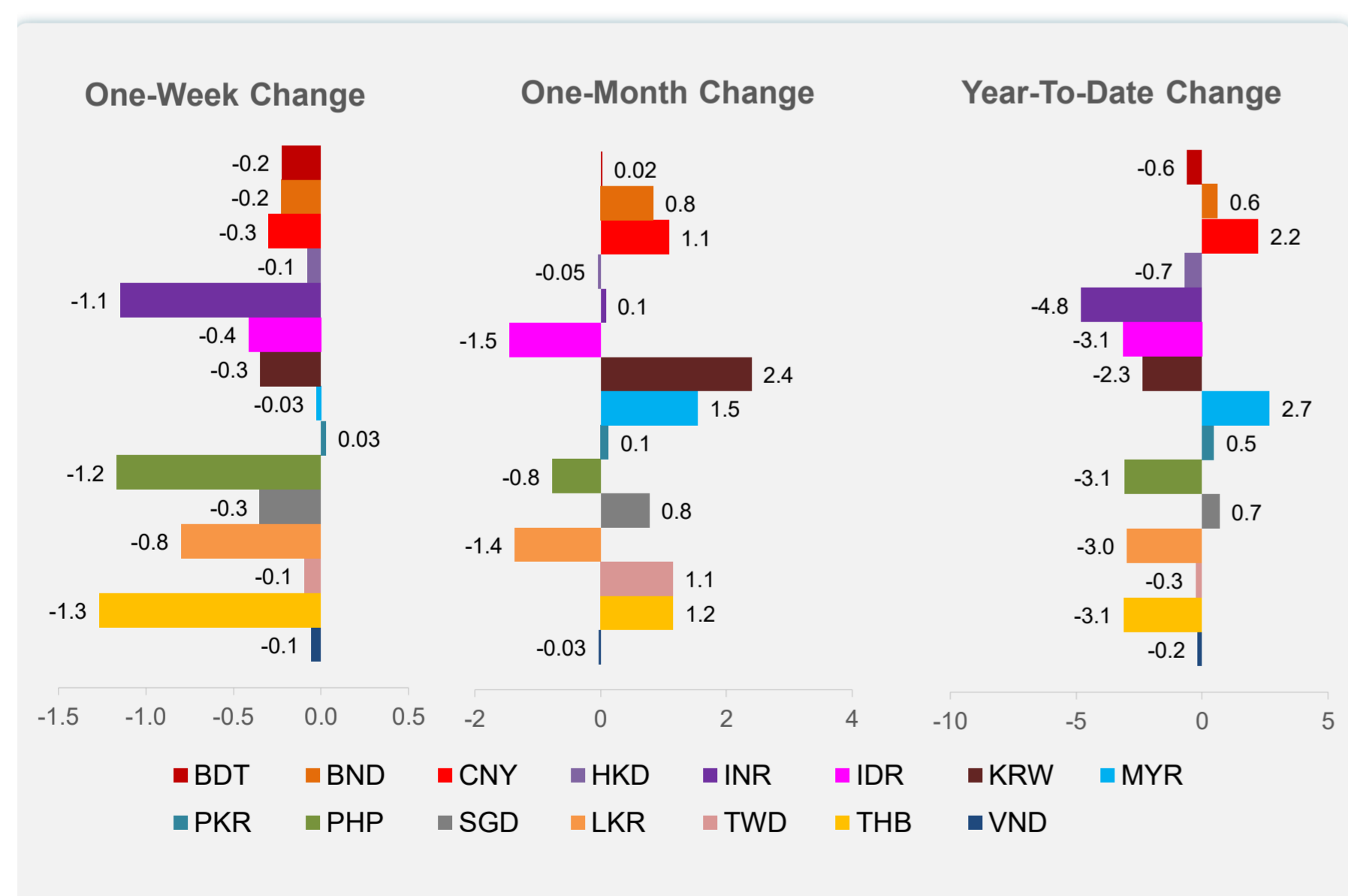
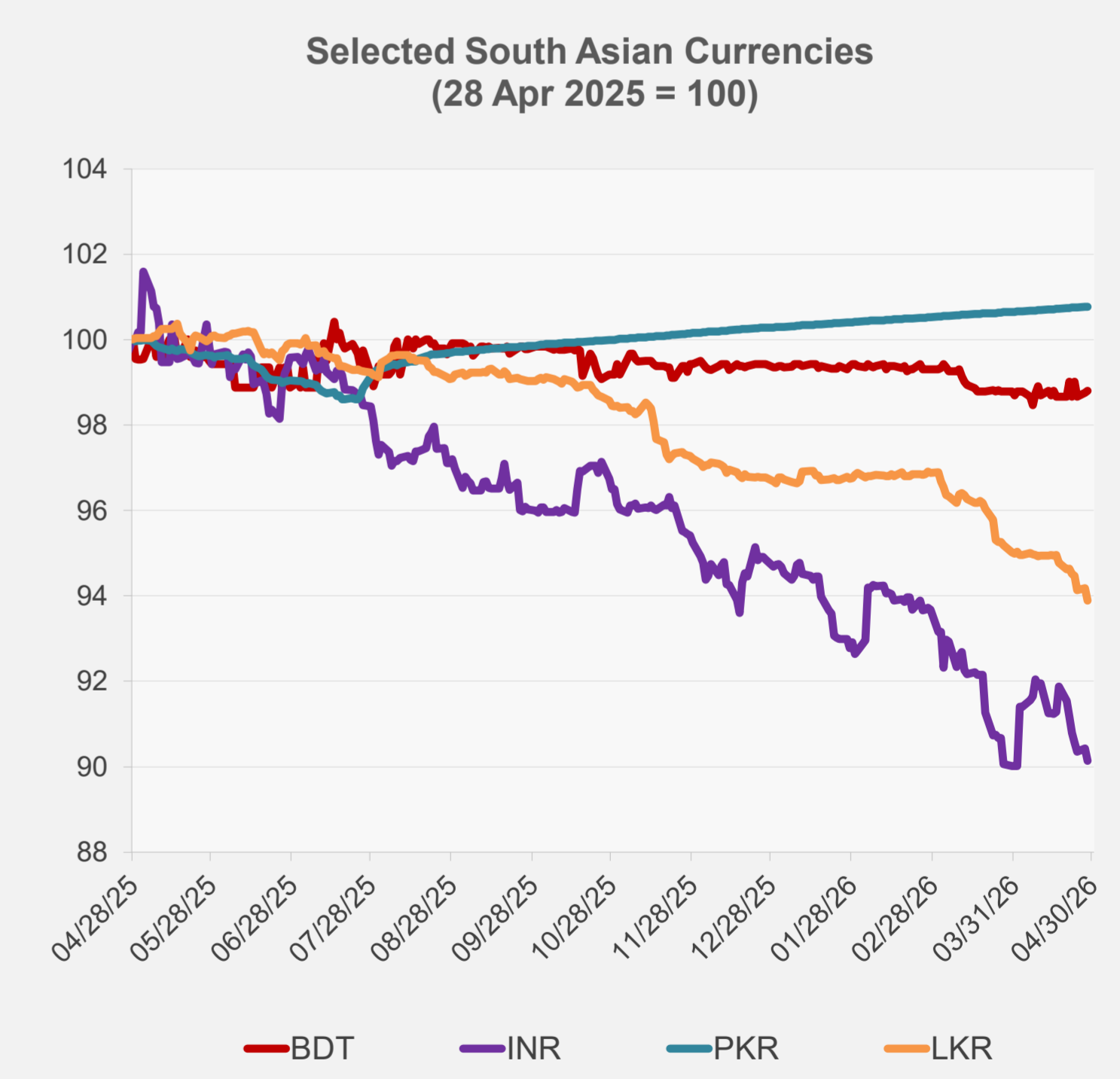
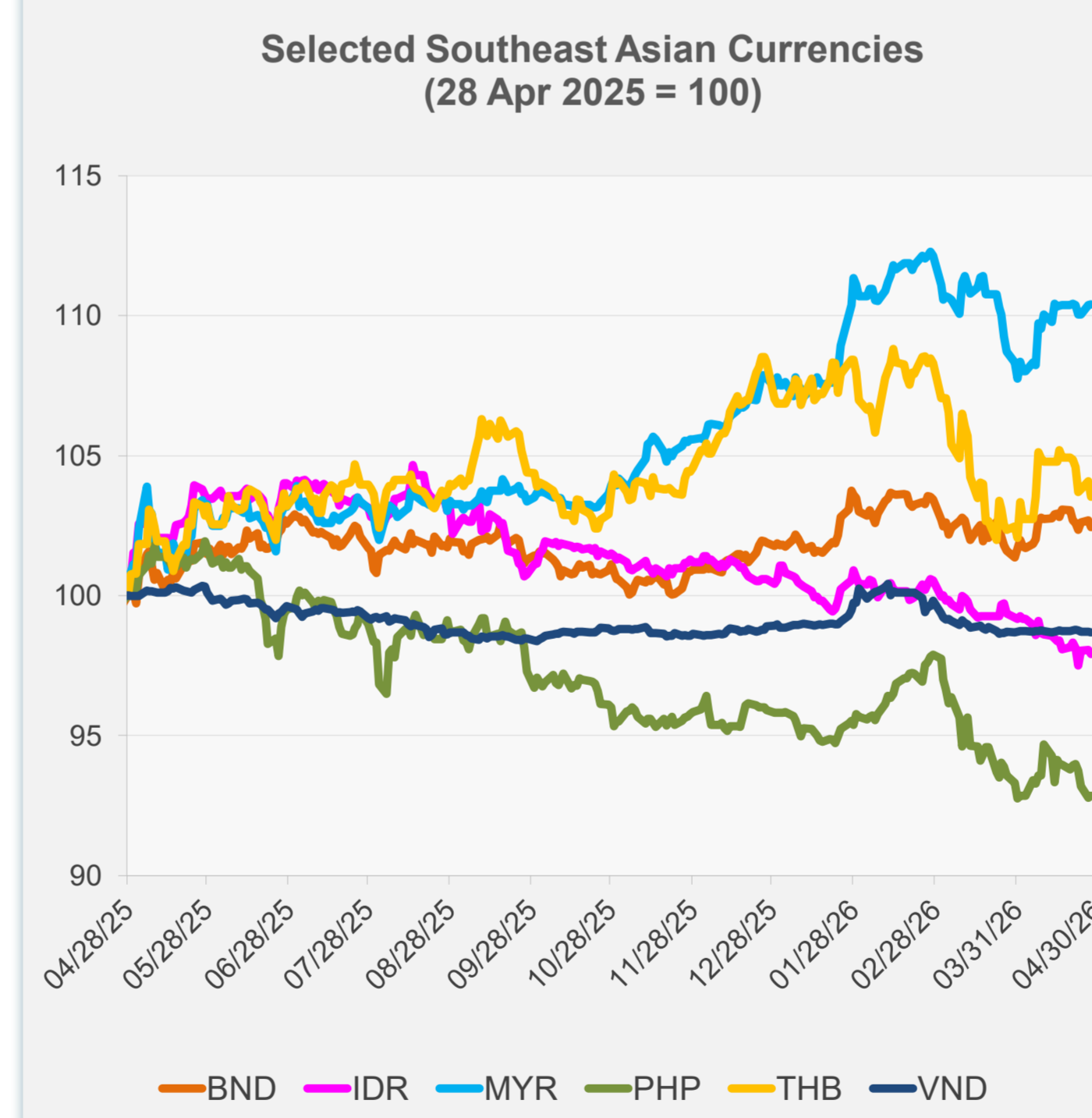


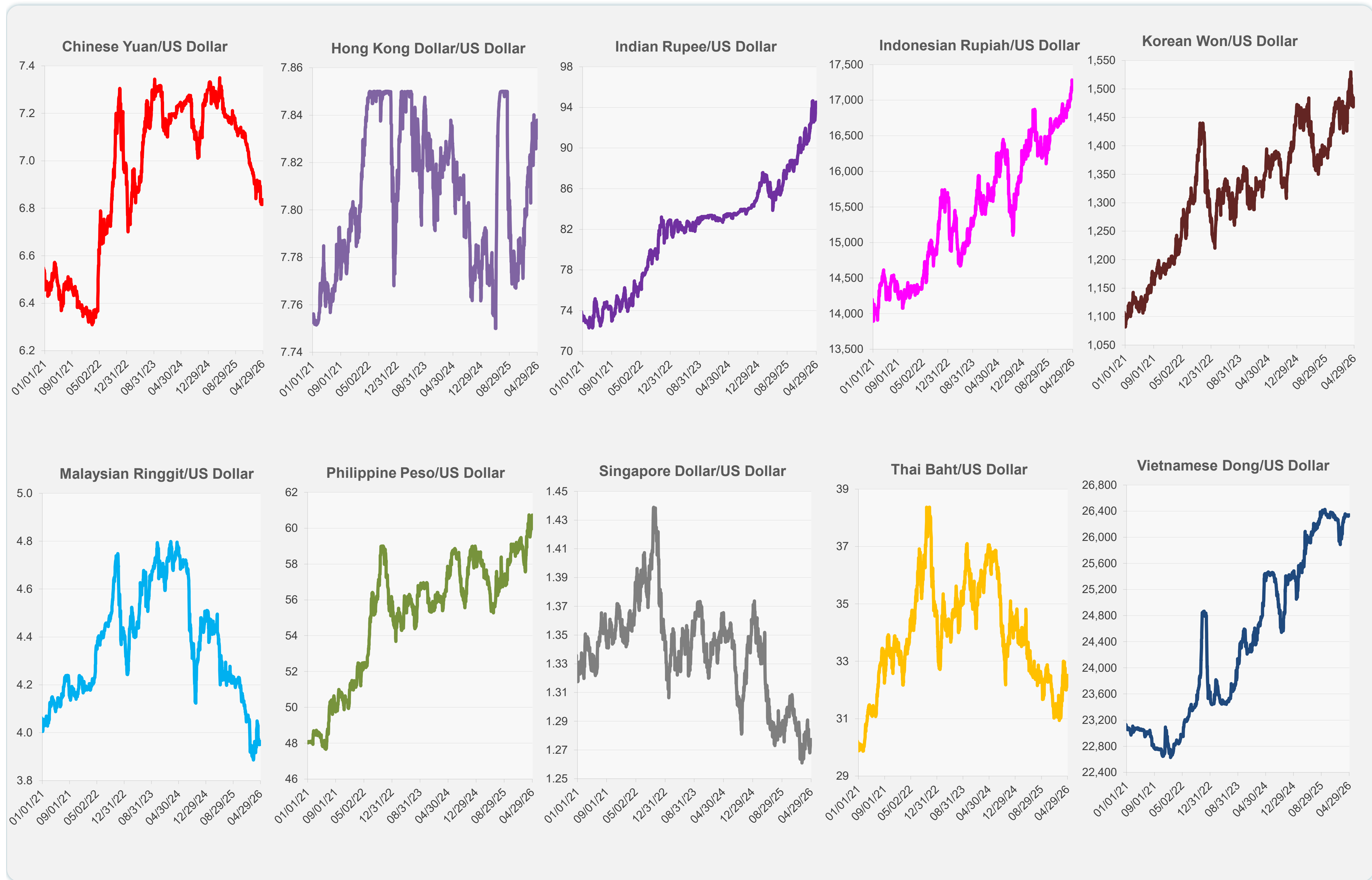
	Latest Closing	% change from Previous Day	% change from 01-Jan-26
Euro	0.85	-0.29	-0.36
Japanese yen (JPY)	159.53	-0.18	-2.23
Bangladeshi taka (BDT)	122.98	0.04	-0.59
Brunei dollar (BND)	1.28	-0.23	0.61
Chinese yuan (CNY)	6.84	-0.18	2.22
Hong Kong dollar (HKD)	7.84	0.02	-0.67
Indian rupee (INR)	94.52	-0.32	-4.81
Indonesian rupiah (IDR)	17,215.00	-0.15	-3.14
Korean won (KRW)	1,473.60	-0.07	-2.35
Malaysian ringgit (MYR)	3.95	0.01	2.68
Pakistan rupee (PKR)	278.80	0.00	0.47
Philippine peso (PHP)	60.68	0.09	-3.09
Singapore dollar (SGD)	1.28	-0.28	0.68
Sri Lanka rupee (LKR)	319.11	-0.31	-2.98
Taipei,China NT dollar (TWD)	31.52	-0.16	-0.25
Thai baht (THB)	32.51	-0.52	-3.10
Vietnamese dong (VND)	26,345.00	-0.02	-0.17



NIE = Newly Industrialized Economies



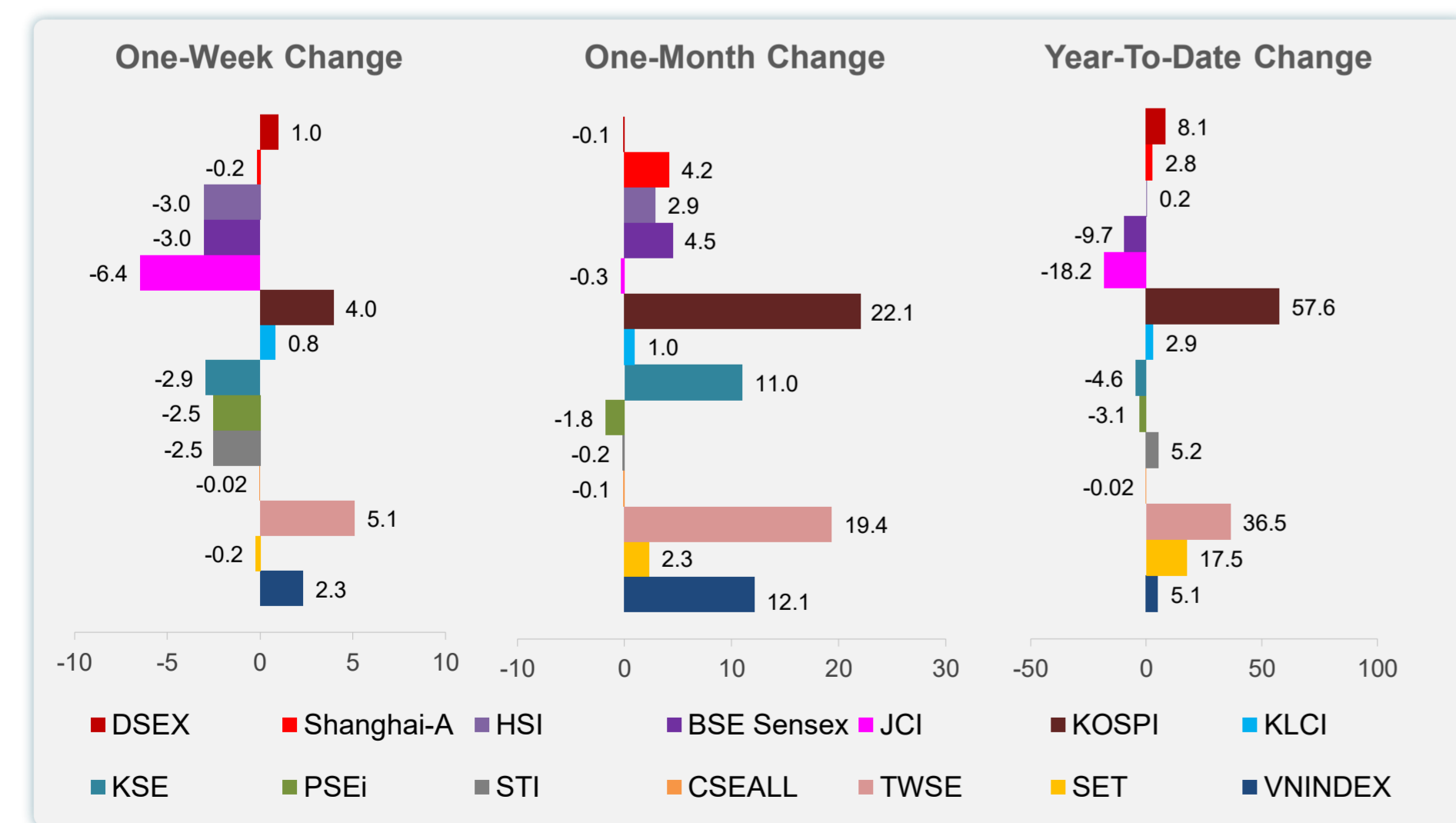
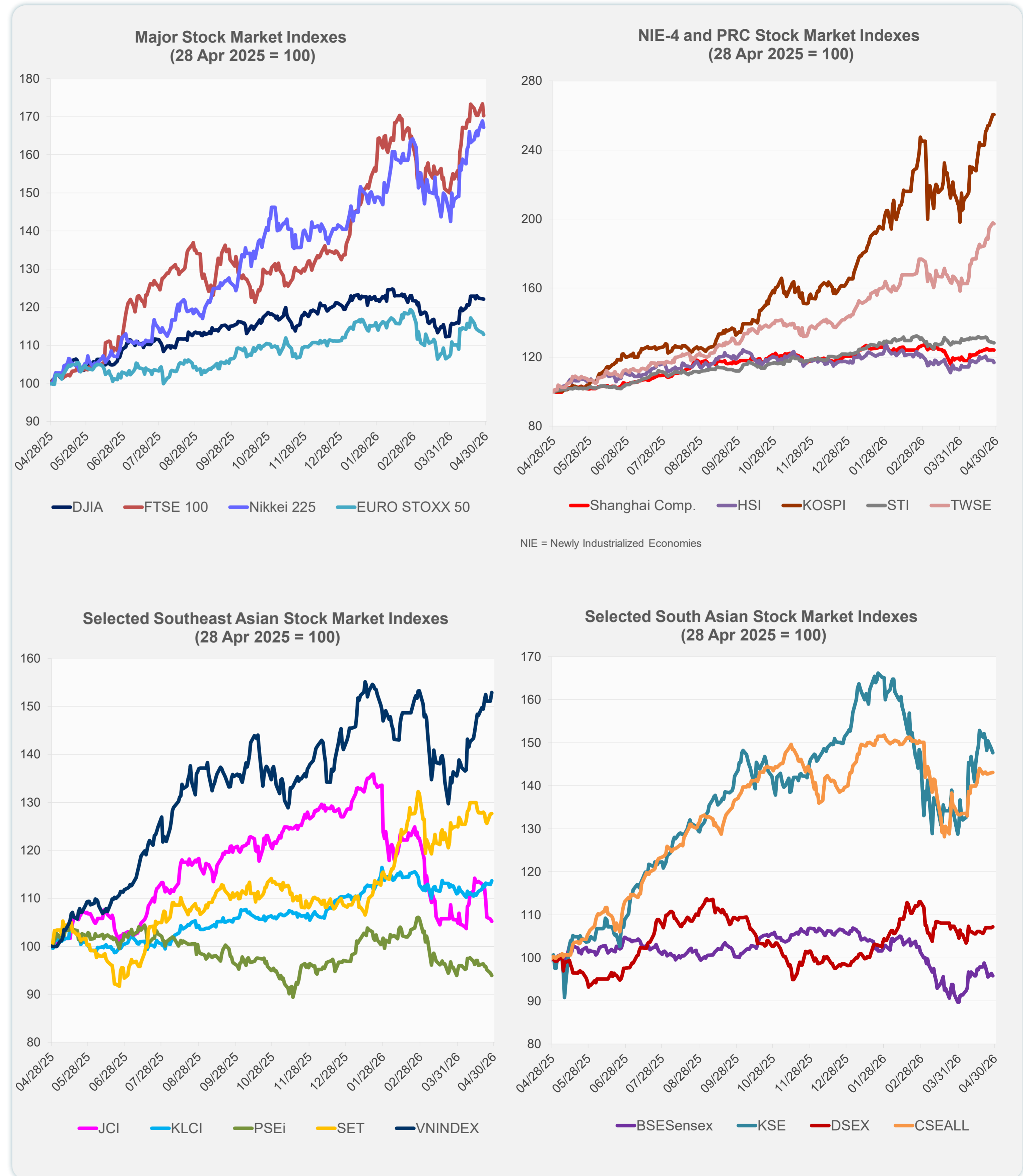
Note: Negative/Decreasing values indicate depreciation of local currency, and positive/increasing values indicate appreciation.  
Source: ADB calculations using data from Bloomberg and Haver Analytics.



Source: Haver Analytics.

Daily Market Watch  
**STOCK INDEXES**

	Latest Closing	% change from Previous Day	% change from 01-Jan-26
US Dow Jones Ind Avg	49,141.93	-0.05	2.24
US NASDAQ	24,663.80	-0.90	6.12
US S&P 500	7,138.80	-0.49	4.28
UK FTSE 100	14,329.34	-1.81	27.24
EURO STOXX 50	5,836.10	-0.41	0.77
Japan NIKKEI 225	59,917.46	-1.02	19.03
Bangladesh DSEX	5,308.89	0.16	8.11
PRC Shanghai Comp.	4,078.64	-0.19	2.77
Hong Kong, China HSI	25,679.78	-0.95	0.19
India BSE Sensex	76,886.91	-0.54	-9.75
Indonesia JCI	7,072.39	-0.48	-18.21
Korea, Rep. of KOSPI	6,641.02	0.00	57.59
Malaysia KLCI	1,729.60	0.72	2.95
Pakistan KSE 100	168,427.10	-0.62	-4.56
Philippines PSEi	5,866.79	-0.58	-3.08
Singapore STI	4,887.69	-0.10	5.20
Sri Lanka CSEALL	22,620.15	0.03	-0.02
Taipei, China TWSE	39,521.73	-0.24	36.45
Thailand SET	1,480.20	0.07	17.51
Viet Nam VNINDEX	1,875.84	1.22	5.12



Sources: ADB calculations using data from Bloomberg and CEIC Data Company.

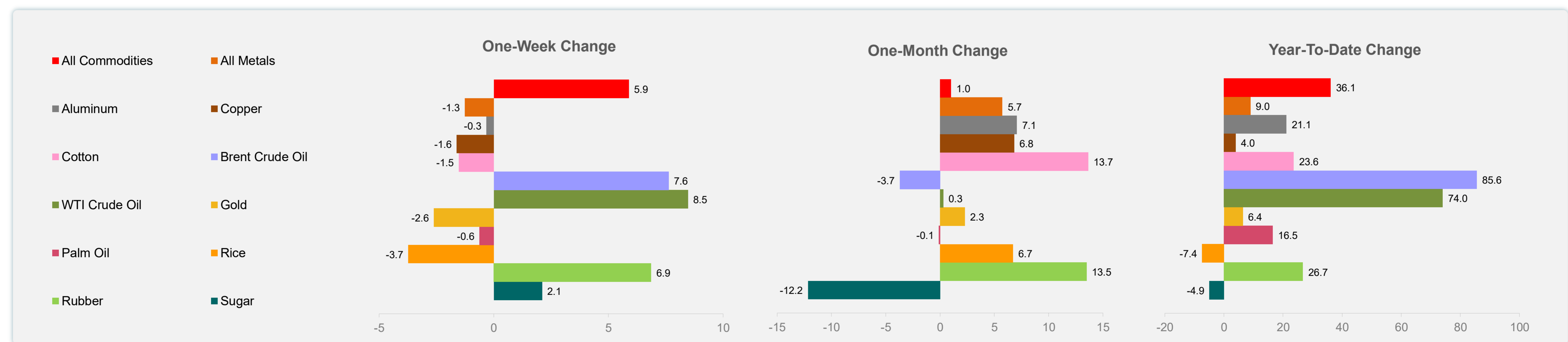
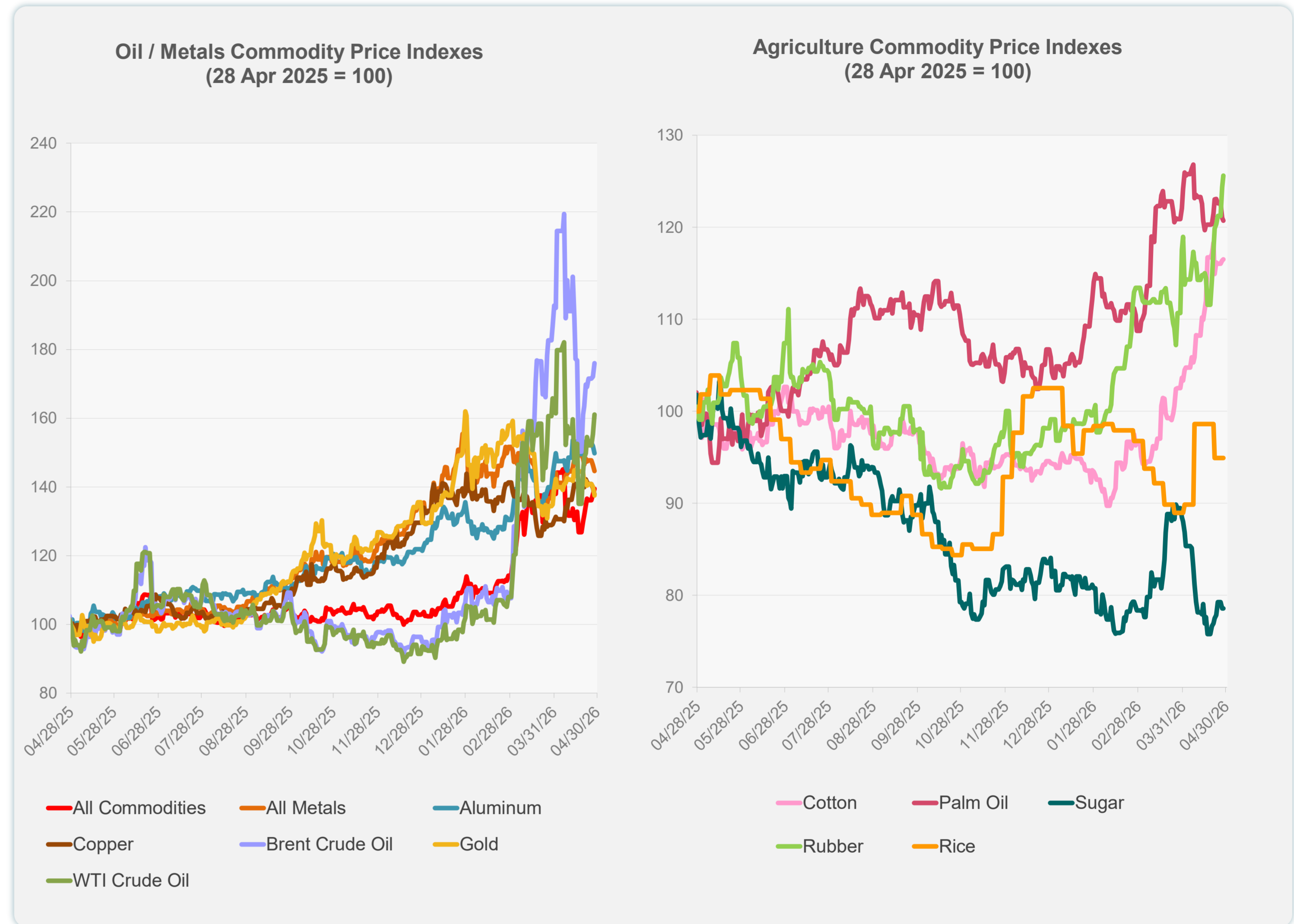


Sources: ADB calculations using data from Bloomberg and CEIC Data Company.

Daily Market Watch  
**COMMODITY PRICES**

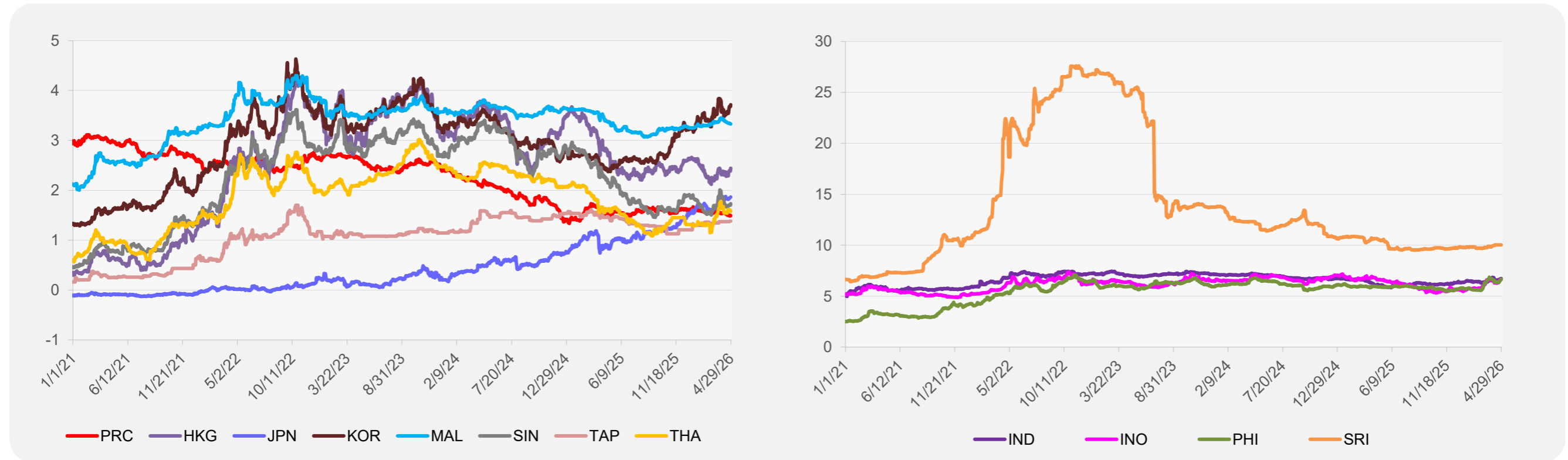
	Unit	Latest Closing	% change from Previous Day	% change from 01-Jan-26
S&P All Commodities	US\$	746.68	1.15	36.13
S&P All Metals	US\$	483.74	-1.24	9.01
Aluminum	US\$/metric ton	3,594.76	-1.35	21.12
Copper	US\$/metric ton	12,951.12	-1.43	4.00
Cotton	US cents/lb	76.67	0.12	23.62
Brent Crude Oil	US\$/barrel	115.87	2.24	85.56
WTI Crude Oil	US\$/barrel	99.93	3.69	74.03
Gold	US\$/troy oz	4,596.75	-1.82	6.42
Palm Oil	US\$/metric tonne	1,128.58	-0.22	16.51
Rice <sup>1</sup>	US\$/metric ton	413.00	0.00	-7.40
Rubber <sup>2</sup>	US\$/kg	272.50	1.00	26.74
Sugar	US cents/lb	14.06	0.00	-4.94

<sup>1</sup> Latest closing price from 22 April 2026.  
<sup>2</sup> Singapore Exchange, Ribbed Smoked Sheet Rubber.

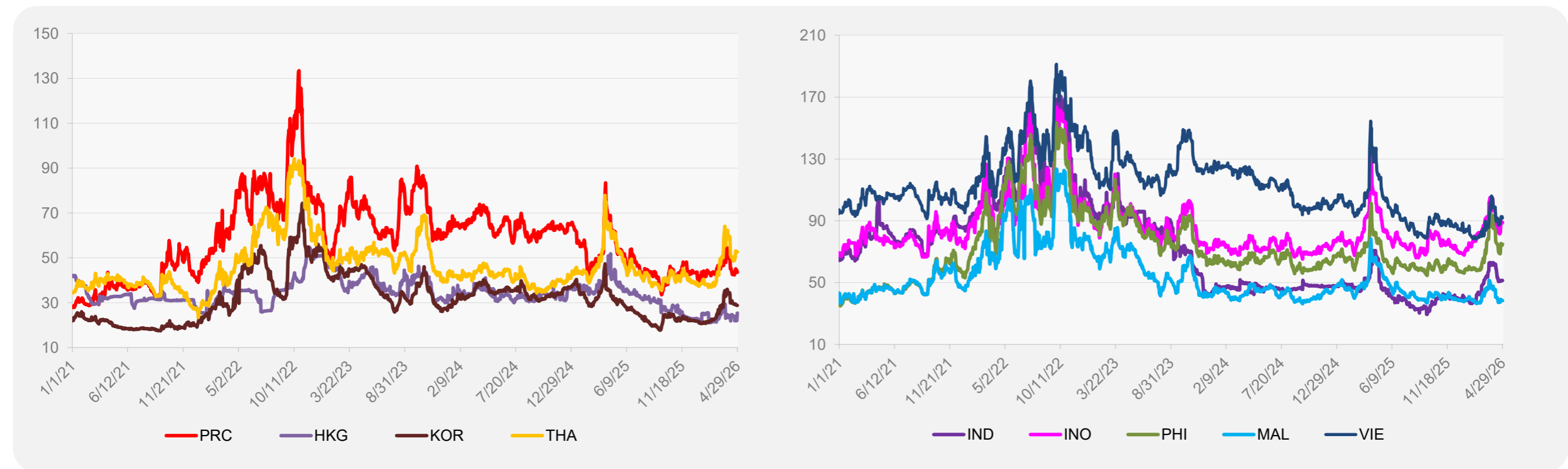


Source: ADB calculations using data from Bloomberg.

### 5-YEAR LOCAL CURRENCY GOVERNMENT BOND YIELDS (%)



### 5-YEAR CREDIT DEFAULT SWAP<sup>1</sup>



<sup>1</sup> In USD and based on sovereign bonds.  
Source: ADB calculations using data from Bloomberg.